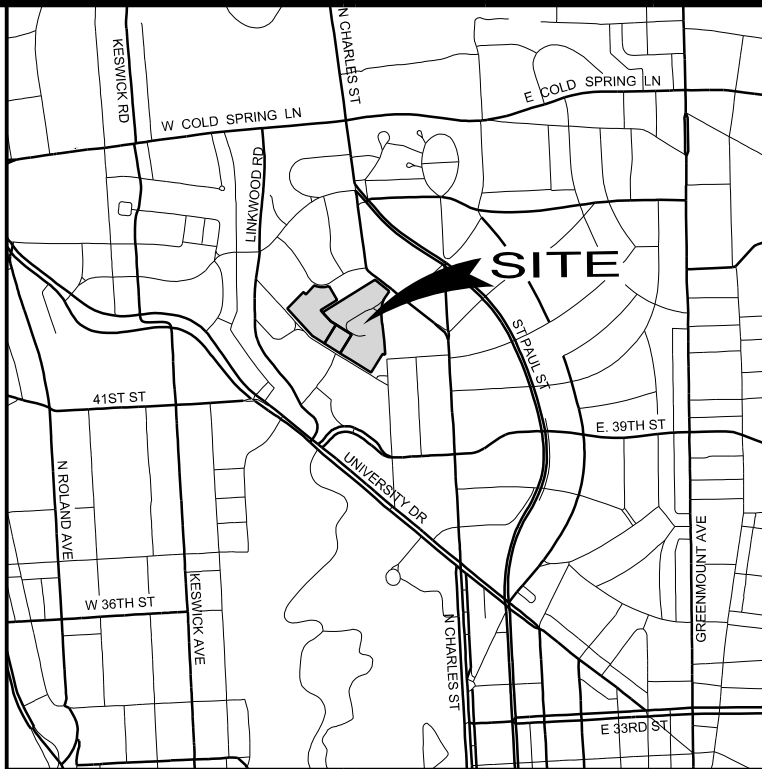


LANDSCAPE LEGEND

- ORNAMENTAL TREES
- EVERGREEN TREES
- SHRUBS
- LANDSCAPE MULCH / BEDLINE
- PERENNIALS
- ORNAMENTAL GRASSES
- TURFGRASS SOD
- TURFGRASS SEED



VICINITY MAP
SCALE: 1"=2,000'

GENERAL LANDSCAPE NOTES

- A FULL FOREST STAND DELINEATION (FSD) WAS SUBMITTED TO BALTIMORE CITY DEPARTMENT OF PLANNING FOREST CONSERVATION COORDINATOR ON APRIL 27, 2021. A FOREST CONSERVATION PLAN (FCP) WAS SUBMITTED TO BALTIMORE CITY DEPARTMENT OF PLANNING FOREST CONSERVATION COORDINATOR ON MAY 4, 2021.
- SEE SHEET L-501 FOR LANDSCAPE NOTES AND MASTER PLANT SCHEDULE.

PLANT SCHEDULE (SHEET L-101 ONLY)

| KEY | QTY | BOTANICAL NAME COMMON NAME | SIZE | ROOT | SPACING | COMMENTS |
|------------------|-----|---|-----------|---------------------|----------|---|
| ORNAMENTAL TREES | | | | | | |
| AM | 3 | AMELANCHIER CANADENSIS 'AUTUMN BRILLIANCE' AUTUMN BRILLIANCE SERVICEBERRY | 8' HT. | #15 CONT. OR B&B | 12' O.C. | MULTI-STEM, 3-5 TRUNKS |
| CC | 9 | CERCIS CANADENSIS EASTERN REDBUD | 2.5' CAL. | B&B | AS SHOWN | SINGLE STEM |
| CCFP | 12 | CERCIS CANADENSIS 'FOREST PANSY' FOREST PANSY EASTERN REDBUD | 2.5' CAL. | B&B | AS SHOWN | SINGLE STEM |
| CF | 6 | CORNUS FLORIDA 'CHEROKEE BRAVE' CHEROKEE BRAVE FLOWERING DOGWOOD | 2.5' CAL. | B&B | AS SHOWN | SINGLE STEM |
| CFC | 6 | CORNUS FLORIDA 'CHEROKEE PRINCESS' CHEROKEE PRINCESS FLOWERING DOGWOOD | 2.5' CAL. | B&B | AS SHOWN | SINGLE STEM |
| EVERGREEN TREES | | | | | | |
| CJY | 3 | CRYPTOMERIA JAPONICA 'YOSHINO' YOSHINO JAPANESE CEDAR | 6' HT. | #10 CONT. OR B&B | AS SHOWN | - |
| IOJK | 2 | ILEX OPACA 'JERSEY KNIGHT' JERSEY KNIGHT AMERICAN HOLLY | 6' HT. | #10 CONT. OR B&B | AS SHOWN | FULL WITH DENSE BRANCHING AND FOLIAGE |
| IOJP | 6 | ILEX OPACA 'JERSEY PRINCESS' JERSEY PRINCESS AMERICAN HOLLY | 6' HT. | #10 CONT. OR B&B | AS SHOWN | FULL WITH DENSE BRANCHING AND FOLIAGE |
| MG | 1 | MAGNOLIA GRANDIFLORA 'LITTLE GEM' LITTLE GEM SOUTHERN MAGNOLIA | 6' HT. | #10 CONT. OR B&B | AS SHOWN | - |
| TGG | 39 | THUJA 'GREEN GIANT' GREEN GIANT ARBORVITAE | 6' HT. | #10 CONT. | 8' O.C. | - |
| TO | 9 | THUJA OCCIDENTALIS 'SMARAGD' EMERALD GREEN AMERICAN ARBORVITAE | 6' HT. | #10 CONT. | 3' O.C. | - |
| SHRUBS | | | | | | |
| RAGL | 77 | RHUS AROMATICA 'GRO-LOW' GRO-LOW FRAGRANT SUMAC | 18" HT. | #3 CONT. | 3' O.C. | - |
| VRH | 8 | VIBURNUM RHYTIDOPHYLLUM LEATHERLEAF VIBURNUM | 4' HT. | #7 CONT. | 5' O.C. | - |

MATCH LINE - SEE SHEET L-102

STV 100 Years
STV Incorporated
7125 Ambassador Road, Suite 200
Baltimore, Maryland 21244
www.stvinc.com

CONSULTANTS

OWNER / APPLICANT

CALVERT SCHOOL INCORPORATED
4300 N. CHARLES STREET
BALTIMORE, MD. 21218
ATTN: TOM TRAVERS
PH: 410.944.9112 EXT. 154

CONTACT INFORMATION

STV INCORPORATED
7125 AMBASSADOR ROAD
SUITE 200
BALTIMORE, MARYLAND 21244
ATTN: NING ZHOU
PH: 410.944.9112
FAX: 410.298.2794

SEAL



PROJECT IDENTIFICATION

THE CALVERT SCHOOL FIELD
HOUSE AND SQUASH COURT

200 TUSCANY ROAD,
204 TUSCANY ROAD &
4300 N. CHARLES STREET
BALTIMORE, MARYLAND 21210

WARD 12 SECTION 1 BLOCK
3701-G LOTS 6, 8, & 18

ISSUE BLOCK

| | |
|--------------|------------------|
| PROJECT NO.: | 3020532 |
| SCALE: | 1" = 30' |
| DATE: | MAY 2021 |
| DESIGNED BY: | HLE |
| DRAWN BY: | HLE |
| CHECKED BY: | SHP |
| APPROVED BY: | NZ |
| COPYRIGHT: | STV INCORPORATED |

REVISED DEVELOPMENT PLAN

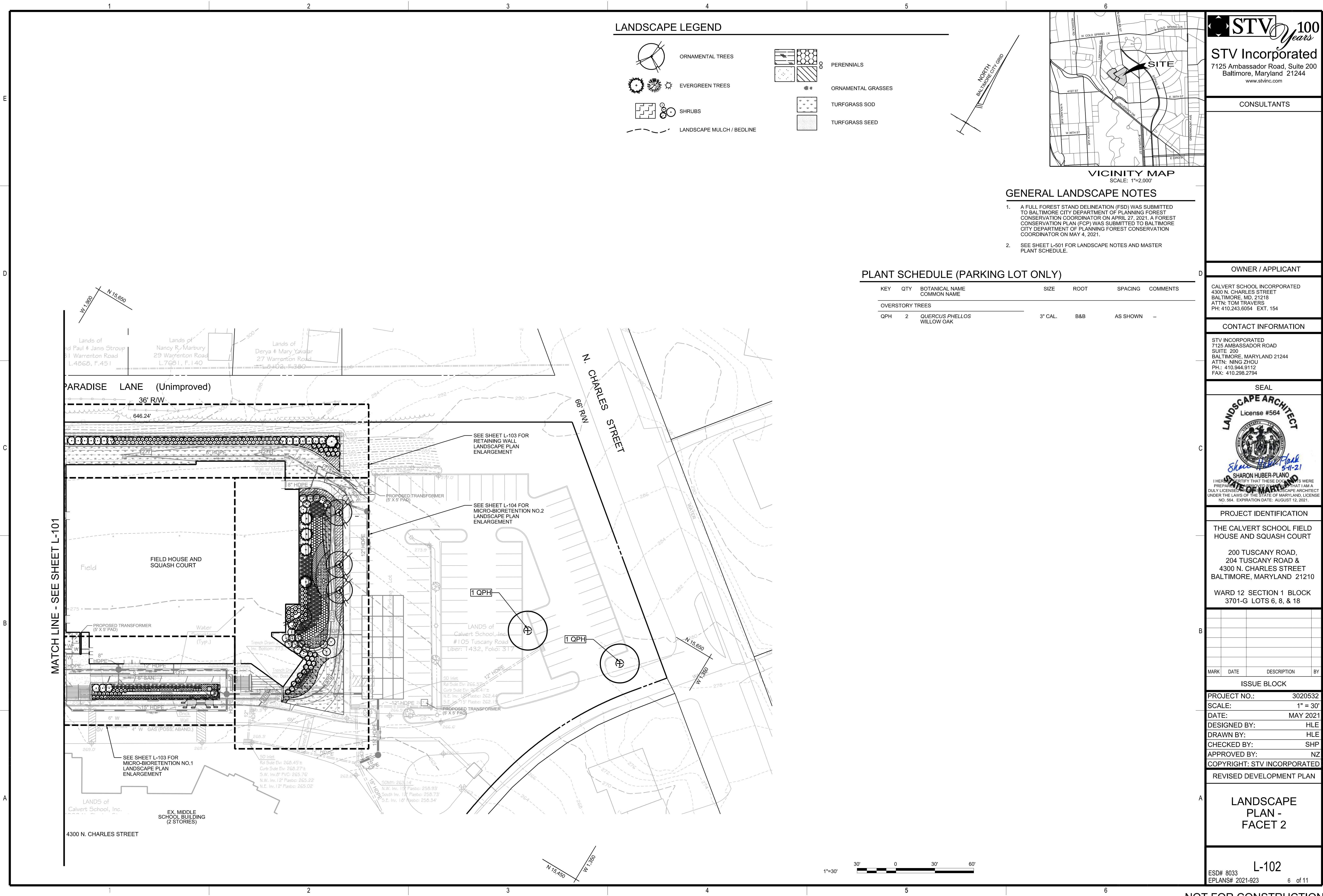
LANDSCAPE
PLAN -
FACET 1

L-101

ESD# 8033
EPLANS# 2021-923

5 of 11

NOT FOR CONSTRUCTION



LANDSCAPE LEGEND

ORNAMENTAL TREES

EVERGREEN TREES

SHRUBS

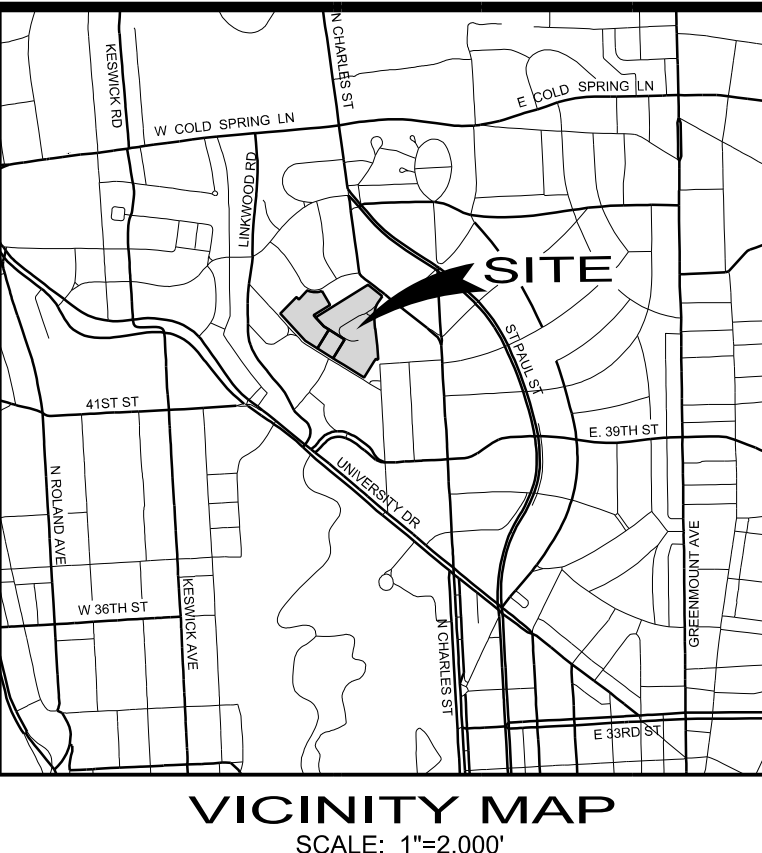
LANDSCAPE MULCH / BEDLINE

PERENNIALS

ORNAMENTAL GRASSES

TURFGRASS SOD

TURFGRASS SEED



GENERAL LANDSCAPE NOTES

1. A FULL FOREST STAND DELINEATION (FSD) WAS SUBMITTED TO BALTIMORE CITY DEPARTMENT OF PLANNING FOREST CONSERVATION COORDINATOR ON APRIL 27, 2021. A FOREST CONSERVATION PLAN (FCP) WAS SUBMITTED TO BALTIMORE CITY DEPARTMENT OF PLANNING FOREST CONSERVATION COORDINATOR ON MAY 4, 2021.
2. SEE SHEET L-501 FOR LANDSCAPE NOTES AND MASTER PLANT SCHEDULE.

PLANT SCHEDULE (PARKING LOT ONLY)

| KEY | QTY | BOTANICAL NAME COMMON NAME | SIZE | ROOT | SPACING | COMMENTS |
|-----------------|-----|-------------------------------|---------|------|----------|----------|
| OVERSTORY TREES | | | | | | |
| QPH | 2 | QUERCUS PHELLOS WILLOW OAK | 3" CAL. | B&B | AS SHOWN | - |

STV Incorporated
7125 Ambassador Road, Suite 200
Baltimore, Maryland 21244
www.stvinc.com

CONSULTANTS

OWNER / APPLICANT

CALVERT SCHOOL INCORPORATED
4300 N. CHARLES STREET
BALTIMORE, MD. 21218
ATTN: TOM TRAVERS
PH: 410.944.9112 EXT. 154

CONTACT INFORMATION

STV INCORPORATED
7125 AMBASSADOR ROAD
SUITE 200
BALTIMORE, MARYLAND 21244
ATTN: NING ZHOU
PH: 410.243.6054
FAX: 410.298.2794

SEAL

SHARON HUBER-PLANO
5-11-21

PROJECT IDENTIFICATION

THE CALVERT SCHOOL FIELD
HOUSE AND SQUASH COURT

200 TUSCANY ROAD,
204 TUSCANY ROAD &
4300 N. CHARLES STREET
BALTIMORE, MARYLAND 21210

WARD 12 SECTION 1 BLOCK
3701-G LOTS 6, 8, & 18

ISSUE BLOCK

PROJECT NO.: 3020532
SCALE: 1" = 30'
DATE: MAY 2021
DESIGNED BY: HLE
DRAWN BY: HLE
CHECKED BY: SHP
APPROVED BY: NZ
COPYRIGHT: STV INCORPORATED

REVISED DEVELOPMENT PLAN

LANDSCAPE PLAN - FACET 2

L-102

ESD# 8033
EPLANS# 2021-923 6 of 11

1. A FULL FOREST STAND DELINEATION (FSD) WAS SUBMITTED TO BALTIMORE CITY DEPARTMENT OF PLANNING FOREST CONSERVATION COORDINATOR ON APRIL 27, 2021. A FOREST CONSERVATION PLAN (FCP) WAS SUBMITTED TO BALTIMORE CITY DEPARTMENT OF PLANNING FOREST CONSERVATION COORDINATOR ON MAY 4, 2021.
2. SEE SHEET L-501 FOR LANDSCAPE NOTES AND MASTER PLANT SCHEDULE.

ORNAMENTAL TREES

EVERGREEN TREES

SHRUBS

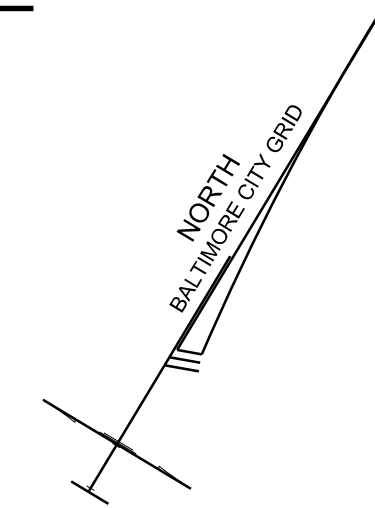
LANDSCAPE MULCH / BEDLINE

PERENNIALS

ORNAMENTAL GRASSES

TURFGRASS SOD

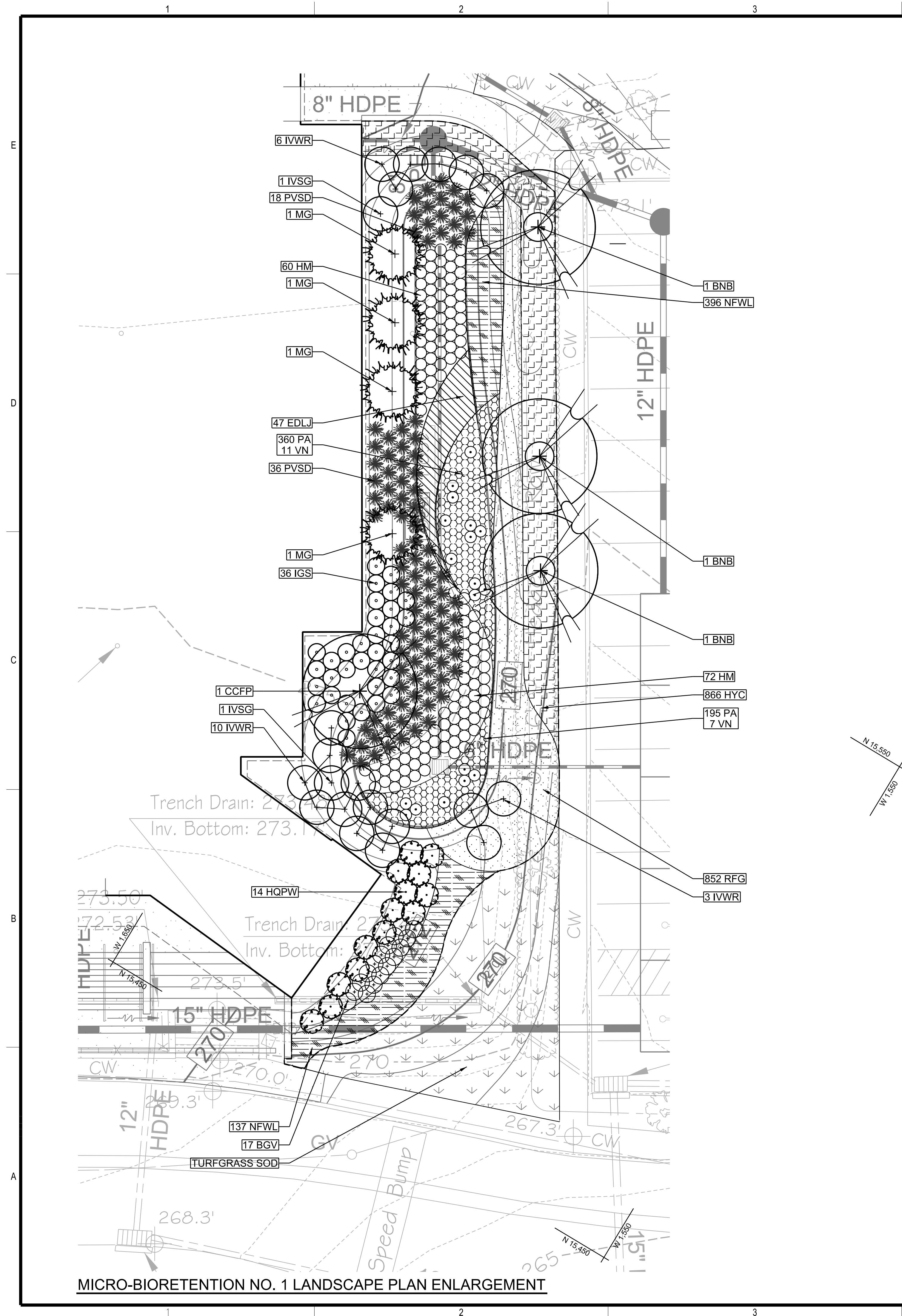
TURFGRASS SEED



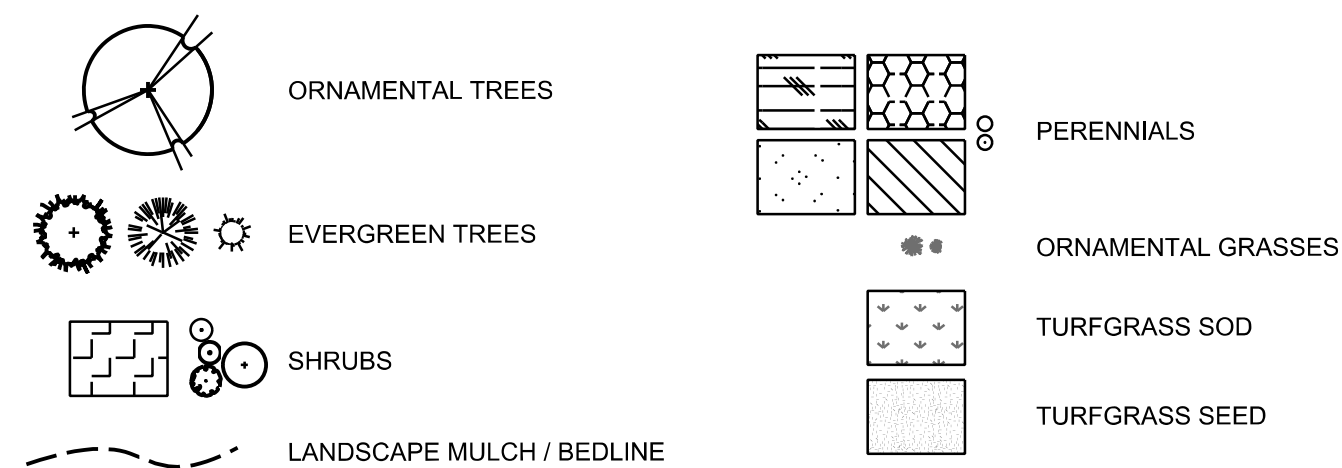
| KEY | QTY | BOTANICAL NAME COMMON NAME | SIZE | ROOT | SPACING | COMMENTS |
|--------------------------------------|-----|--|---------|---------------------|----------|----------|
| EVERGREEN TREES | | | | | | |
| MG | 1 | MAGNOLIA GRANDIFLORA 'LITTLE GEM' LITTLE GEM SOUTHERN MAGNOLIA | 6" HT. | #10 CONT. OR B&B | AS SHOWN | — |
| SHRUBS | | | | | | |
| FOG | 44 | FOTHERGILLA GARDENII DWARF WITCHALDER | 36" HT. | #5 CONT. | AS SHOWN | — |
| HVLS | 1 | HAMAMELIS VIRGINIANA 'LITTLE SUZIE' LITTLE SUZIE WITCHHAZEL | 36" HT. | #5 CONT. | AS SHOWN | — |
| HQPW | 11 | HYDRANGEA QUERCIFOLIA 'PEE WEE' PEE WEE OAKLEAF HYDRANGEA | 18" HT. | #3 CONT. | AS SHOWN | — |
| HYC | 165 | HYPERICUM CALYCINUM AARON'S BEARD | #1 | CONT. | 12" O.C. | — |
| IGS | 14 | ILEX GLABRA 'SHAMROCK' SHAMROCK INKBERRY | 24" HT. | #3 CONT. | 3' O.C. | — |
| IVWR | 3 | ILEX VERTICILLATA 'WINTER RED' WINTER RED WINTERBERRY | 36" HT. | #5 CONT. | AS SHOWN | — |
| RAGL | 27 | RHUS AROMATICA 'GRO-LOW' GRO-LOW FRAGRANT SUMAC | 18" HT. | #3 CONT. | 3' O.C. | — |
| RPJM | 52 | RHODODENDRON 'PJM' PJM RHODODENDRON | 18" HT. | #3 CONT. | 3' O.C. | — |
| VRH | 14 | VIBURNUM RHYTIDOPHYLLUM LEATHERLEAF VIBURNUM | 4' HT. | #7 CONT. | 5' O.C. | — |
| PERENNIALS, GRASSES AND GROUNDCOVERS | | | | | | |
| EDLJ | 19 | EUTROCHIMUM DUBIUM 'LITTLE JOE' LITTLE JOE COASTAL PLAIN JOE PYE WEED | #1 | CONT. | 24" O.C. | — |
| RFG | 248 | RUDBECKIA FULGIDA 'GOLDSTURM' GOLDSTURM ORANGE CONEFLOWER | SP#4 | CONT. | 12" O.C. | — |
| PVSD | 23 | PANICUM VIRGATUM 'SHENANDOAH' SHENANDOAH SWITCHGRASS | #1 | CONT. | 30" O.C. | — |
| PA | 165 | PAKERA AUREA GOLDEN RAGWORT | SP#4 | CONT. | 12" O.C. | — |
| SSTB | 11 | SCHIZACHYRIUM SCOPARIUM 'THE BLUES' THE BLUES LITTLE BLUESTEM | #1 | CONT. | AS SHOWN | — |
| VN | 11 | VERNONIA NOVEBORACENSIS NEW YORK IRONWEED | #1 | CONT. | 24" O.C. | — |



5/10/2021 1:36:22 PM english

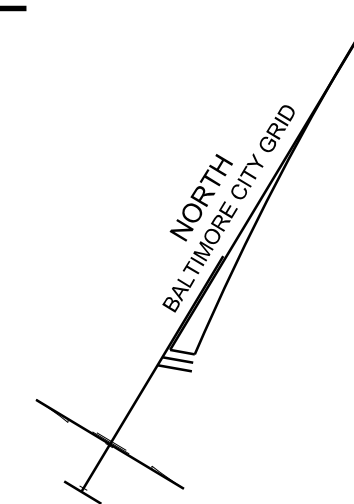


LANDSCAPE LEGEND



PLANT SCHEDULE (SHEET L-105 ONLY)

| KEY | QTY | BOTANICAL NAME COMMON NAME | SIZE | ROOT | SPACING | COMMON COMMENTS |
|--|-----|---|-----------|---------------------|----------|-------------------------|
| ORNAMENTAL TREES | | | | | | |
| BNB | 3 | <i>BETULA NIGRA</i> 'BNMTF' DURA-HEAT RIVER BIRCH | 8' HT. | B&B | AS SHOWN | MULTI-STEM, 3 TRUNKS |
| CCFP | 1 | <i>CERCIS CANADENSIS</i> 'FOREST PANSY' FOREST PANSY EASTERN REDBUD | 2.5" CAL. | B&B | AS SHOWN | SINGLE STEM |
| EVERGREEN TREES | | | | | | |
| MG | 4 | <i>MAGNOLIA GRANDIFLORA</i> 'LITTLE GEM' LITTLE GEM SOUTHERN MAGNOLIA | 6' HT. | #10 CONT. OR B&B | AS SHOWN | - |
| SHRUBS | | | | | | |
| BGV | 17 | <i>BUXUS</i> X 'GREEN VELVET' GREEN VELVET BOXWOOD | 24" HT. | #3 CONT. | AS SHOWN | - |
| HQPW | 14 | <i>HYDRANGEA QUERCIFOLIA</i> 'PEE WEE' PEE WEE OAKLEAF HYDRANGEA | 18" HT. | #3 CONT. | AS SHOWN | - |
| HYC | 866 | <i>HYPERICUM CALYGINUM</i> AARON'S BEARD | #1 | CONT. | 12" O.C. | - |
| IGS | 36 | <i>ILEX GLABRA</i> 'SHAMROCK' SHAMROCK INKBERRY | 24" HT. | #3 CONT. | 3' O.C. | - |
| IVSG | 2 | <i>ILEX VERTICILLATA</i> 'SOUTHERN GENTLEMAN' SOUTHERN GENTLEMAN WINTERBERRY | 36" HT. | #5 CONT. | AS SHOWN | - |
| IVWR | 19 | <i>ILEX VERTICILLATA</i> 'WINTER RED' WINTER RED WINTERBERRY | 36" HT. | #5 CONT. | AS SHOWN | - |
| PERENNIALS AND ORNAMENTAL GRASSES | | | | | | |
| EDLJ | 47 | <i>EUTROCHIMUM DUBIUM</i> 'LITTLE JOE' LITTLE JOE COASTAL PLAIN JOE PYE WEED | #1 | CONT. | 24" O.C. | - |
| HM | 132 | <i>HIBISCUS MOSCHEUTOS</i> CRIMSONEYED ROSEMALLOW | #1 | CONT. | 24" O.C. | - |
| RFG | 852 | <i>RUDEBECKIA FULGIDA</i> 'GOLDSTURM' GOLDSTURM ORANGE CONEFLOWER | SP#4 | CONT. | 12" O.C. | - |
| NFWL | 533 | <i>NEPETA</i> X <i>FAASSENII</i> 'WALKER'S LOW' WALKER'S LOW CATMINT | #1 | CONT. | 18" O.C. | - |
| PVSD | 54 | <i>PANICUM VIRGATUM</i> 'SHENANDOAH' SHENANDOAH SWITCHGRASS | #1 | CONT. | 30" O.C. | - |
| PA | 555 | <i>PAKERA AUREA</i> GOLDEN RAGWORT | SP#4 | CONT. | 12" O.C. | - |
| VN | 18 | <i>VERNONIA NOVEBORACENSIS</i> NEW YORK IRONWEED | #1 | CONT. | 24" O.C. | - |



VICINITY MAP
SCALE: 1"=2,000'

GENERAL LANDSCAPE NOTES

1. A FULL FOREST STAND DELINEATION (FSD) WAS SUBMITTED TO BALTIMORE CITY DEPARTMENT OF PLANNING FOREST CONSERVATION COORDINATOR ON APRIL 27, 2021. A FOREST CONSERVATION PLAN (FCP) WAS SUBMITTED TO BALTIMORE CITY DEPARTMENT OF PLANNING FOREST CONSERVATION COORDINATOR ON MAY 4, 2021.
2. SEE SHEET L-501 FOR LANDSCAPE NOTES AND MASTER PLANT SCHEDULE.



CONSULTANTS

OWNER / APPLICANT

CALVERT SCHOOL INCORPORATED
4300 N. CHARLES STREET
BALTIMORE, MD, 21218
ATTN: TOM TRAVERS
PH: 410.243.6054 EXT. 154

CONTACT INFORMATION

STV INCORPORATED
7125 AMBASSADOR ROAD
SUITE 200
BALTIMORE, MARYLAND 21244
ATTN: NING ZHOU
PH.: 410.944.9112
FAX: 410.298.2794



PROJECT IDENTIFICATION

THE CALVERT SCHOOL FIELD
HOUSE AND SQUASH COURT

200 TUSCANY ROAD,
204 TUSCANY ROAD &
4300 N. CHARLES STREET
BALTIMORE, MARYLAND 21210

WARD 12 SECTION 1 BLOCK
3701-G LOTS 6, 8, & 18

| MARK | DATE | DESCRIPTION | |
|------|------|-------------|--|
|------|------|-------------|--|

ISSUE BLOCK

| | |
|--------------|---------|
| PROJECT NO.: | 3020532 |
|--------------|---------|

SCALE: 1" = 10'

DATE: MAY 2021

DESIGNED BY: HLE

DRAWN BY: HLE

CHECKED BY: SHP

APPROVED BY: _____ NZ

COPYRIGHT: STV INCORPORATED

REVISÉD DEVELOPMENT PLAN

LANDSCAPE
PLAN
ENLARGEMENT

L-104

ESD# 8033
EPLANS# 2021-923

8 of 11

LANDSCAPE NOTES:

SITE CONDITIONS

- CONTRACTOR SHALL VERIFY THE 'AS BUILT' LOCATIONS OF ALL UTILITIES PRIOR TO DIGGING. CONTRACTOR SHALL BE RESPONSIBLE FOR ANY DAMAGE TO UTILITIES AND MAKE MINOR ADJUSTMENTS IN SPACING AND/OR LOCATION OF PLANT MATERIALS TO AVOID CONFLICTS WITH UTILITIES.
- CONSULT WITH THE LANDSCAPE ARCHITECT IF SIGNIFICANT REVISION TO THE PLANTING PLAN IS REQUIRED DUE TO THE FIELD CONDITIONS.
- CONTRACTOR SHALL PERFORM ALL WORK IN A MANNER THAT PROTECTS COMPLETED WORK BY OTHERS.

SUBMITTALS

- MATERIAL TEST REPORTS: TOPSOIL, COMPOST, PLANTING SOIL MIX, AND MULCH.
- SAMPLES FOR VERIFICATION: TOPSOIL, COMPOST, PLANTING SOIL MIX, AND MULCH. PROVIDE 1-QUART SAMPLE IN SEALED PLASTIC BAG, CLEARLY LABELED WITH NAME/COMPOSITION AND SOURCE.
- PLANT MATERIALS: PROVIDE COMPLETE LIST WITH SCIENTIFIC AND COMMON NAME, QUANTITY, SIZE, AND SOURCE FOR ALL PLANTS. PLANTS SHALL BE OBTAINED FROM REGIONAL SOURCES.
- FOR TREES TO BE SELECTED AND TAGGED BY THE LANDSCAPE ARCHITECT: CONTRACTOR SHALL IDENTIFY AT LEAST 2 GROWING NURSERIES WITHIN 100 MILES OF THE PROJECT SITE WITH SUITABLE SELECTION OF THE REQUIRED SPECIES. FOR BEST QUALITY MATERIALS, NURSERY SOURCES SHOULD BE IDENTIFIED ONE FULL GROWING SEASON IN ADVANCE OF INSTALLATION.
- FOR TREES NOT SELECTED AT THE NURSERY BY THE LANDSCAPE ARCHITECT: PROVIDE REPRESENTATIVE COLOR PHOTOGRAPHS OF EACH SPECIES CLEARLY SHOWING BRANCH STRUCTURE AND OVERALL FORM. IDENTIFY EACH PHOTOGRAPH WITH THE FULL SCIENTIFIC NAME, SIZE AND NAME OF THE GROWING NURSERY. INCLUDE A SCALE ROD OR OTHER MEASURING DEVICE IN EACH PHOTOGRAPH.
- MAINTENANCE SCHEDULE FOR TWO-YEAR WARRANTY PERIOD SHALL BE SUBMITTED PRIOR TO SUBSTANTIAL COMPLETION.

PLANT MATERIALS

- PLANT MATERIALS SHALL MEET OR EXCEED THE STANDARDS PUBLISHED IN THE 'AMERICAN STANDARD FOR NURSERY STOCK', ANSI Z60.1, LATEST EDITION.
- PROVIDE VIGOROUS, HEALTHY, FULLY BRANCHED PLANTS TYPICAL OF SPECIES, CULTIVAR OR VARIETY SPECIFIED. TREES WITH DAMAGED OR CROOKED CENTRAL LEADERS, BRANCHES WITH 'INCLUDED BARK', CROSSING TRUNKS, OR STEM GIRDLING ROOTS WILL NOT BE ACCEPTED. EXCESS SOIL COVERING THE TRUNK FLARE SHALL BE REMOVED AT THE NURSERY BEFORE DIGGING.
- PLANT MATERIAL MAY BE OBSERVED BY THE LANDSCAPE ARCHITECT AT THE NURSERY OR AT THE PROJECT SITE BEFORE PLANTING FOR COMPLIANCE WITH GENUS, SPECIES, VARIETY, CULTIVAR, SIZE AND QUALITY. THE LANDSCAPE ARCHITECT RESERVES THE RIGHT TO FURTHER OBSERVE FOR SIZE AND CONDITION OF ROOT BALLS AND ROOT SYSTEMS, PESTS OR DISEASE SYMPTOMS, INJURIES AND LATENT DEFECTS, AND TO REJECT UNSATISFACTORY MATERIAL AT ANY TIME DURING THE PROGRESS OF WORK.
- CONTAINER, CONTAINERIZED TREES, AND PROCESSED ROOT BALLS ARE NOT ACCEPTABLE SUBSTITUTIONS FOR SPECIFIED B&B TREES.
- SHADE TREES TO BE PLANTED ALONG STREETS AND WALKWAYS SHALL HAVE A MINIMUM BRANCHING HEIGHT OF SIX (6) FEET ABOVE FINISHED GRADE.
- CONTRACTOR SHALL VERIFY PLANT QUANTITIES, QUANTITIES INDICATED ON THE PLANS SHALL TAKE PRECEDENCE OVER QUANTITIES SHOWN IN THE PLANT SCHEDULE.
- SUPPLY PLANTS GROWN IN USDA HARDINESS ZONE 6 OR 7 AND WITHIN APPROXIMATELY 200 MILES NORTH OR SOUTH OF THE PROJECT SITE. SUBMIT SOURCE OF SUPPLY TO LANDSCAPE ARCHITECT FOR APPROVAL WELL IN ADVANCE OF SHIPPING PLANTS.
- PROPOSED SUBSTITUTIONS FOR SPECIES OR SIZE OF PLANT MATERIALS SHALL BE SUBMITTED TO THE LANDSCAPE ARCHITECT FOR APPROVAL. THE REQUEST SHALL STATE THE REASONS FOR THE SUBSTITUTION REQUEST AND SUGGESTED ALTERNATIVES.

SOIL MATERIALS

- PLANTING SOIL MIX: THOROUGHLY COMBINE 9 PARTS LOAM OR SANDY LOAM TOPSOIL AND 1 PART COMPOST. pH SHALL BE BETWEEN 5.8 - 6.8. PROVIDE LAB RESULTS TO VERIFY COMPOSITION AND pH.
- TOPSOIL SHALL BE TESTED TO ESTABLISH SUITABILITY FOR USE AS PLANTING SOIL. LAB REPORT SHALL INCLUDE ANALYSIS OF SAND FRACTIONS, MACRONUTRIENTS AND MICRONUTRIENTS WITH RECOMMENDATIONS FOR AMENDMENTS TO ADDRESS ANY NUTRIENT DEFICIENCIES.
- TOPSOIL COMPOSITION: FERTILE SURFACE SOIL FREE OF SUBSOIL, CONTAMINANTS, WEEDS AND ROOTS, DEBRIS AND STONES OVER 1-INCH IN DIAMETER. PROVIDE SOIL TEST RESULTS FROM A QUALIFIED, INDEPENDENT LABORATORY IN COMPLIANCE WITH THE FOLLOWING:

NATURAL (UNAMENDED) pH: 5.8 - 6.8

SAND: 30 % - 75 % SILT: 10 % - 45 %

CLAY: 10 % - 25 % ORGANIC MATTER: 2 % - 6 %

SOLUBLE SALTS/CONDUCTIVITY: MAX 600 ppm/0.9 mmhos/cm
- DO NOT TOPDRESS OR ADD FERTILIZER TO PLANTING SOIL MIX UNLESS BASED ON SPECIFIC WRITTEN RECOMMENDATIONS FROM SOIL TEST RESULTS. WHEN REQUIRED, PROVIDE SLOW-RELEASE FERTILIZER WITH A MINIMUM OF 50% WATER INSOLUBLE NITROGEN (WIN) AND SALT INDEX LESS THAN 50.
- COMPOST SHALL BE MATURE, WELL-COMPOSTED AND WEED-FREE ORGANIC MATERIALS MEETING THE U.S. COMPOSTING COUNCIL (www.compostingcouncil.org) SEAL OF TESTING APPROVAL REQUIREMENTS. COMPOST FOR TOPDRESSING OF PLANTING BEDS SHALL BE DERIVED FROM LOCALLY PRODUCED LEAVES/YARD WASTE.
- TOPSOIL AND COMPOST TESTING DATA SHALL BE SUBMITTED A MINIMUM OF 4 WEEKS BEFORE ANY PLACEMENT OF TOPSOIL OR PLANTING IS SCHEDULED TO OCCUR. DATA FOR BOTH TOPSOIL AND COMPOST ARE REQUIRED CONCURRENTLY.

PLANTING AREA PREPARATION AND PLANTING EXECUTION

- INSTALL PLANTS WITHIN THE FOLLOWING SEASONS UNLESS OTHERWISE APPROVED:

TREES AND SHRUBS: MARCH 1 TO MAY 15 & SEPTEMBER 15 TO NOVEMBER 30

ORNAMENTAL GRASSES/PERENNIALS: MAY 1 TO JUNE 15 & SEPT 1 TO OCTOBER 30

HERBACEOUS PLANTS SHALL BE INSTALLED WHEN THERE IS NO IMMEDIATE DANGER OF FROST.
- PRE-INSTALLATION CONFERENCE SHALL BE HELD AT THE SITE PRIOR TO THE START OF PLANTING BED PREPARATION.
- PREPARE PLANTING AREAS AS INDICATED ON DETAILS. VERIFY ADEQUATE DRAINAGE FROM PLANTING AREAS PRIOR TO BACKFILLING AND REPORT POTENTIAL PROBLEMS. PERCOLATION RATES OF 1 TO 2 INCHES PER HOUR ARE DESIRABLE.
- SATURATE PLANTING SOILS THOROUGHLY AFTER PLACEMENT TO AID SOIL SETTLEMENT. ONCE EXCESS MOISTURE HAS DRAINED FROM THE SOIL, PLACE ADDITIONAL PLANTING SOIL AS NEEDED TO ASSURE PROPER FINISH GRADE. TOPDRESSING WITH COMPOST SHALL OCCUR AFTER PLACEMENT OF PLANTING SOIL IS COMPLETE.
- APPLY 2 INCHES OF YARD/LEAF COMPOST TO THE SURFACE OF THE PREPARED PLANTING BEDS AND LIGHTLY TILL INTO THE TOP 6 INCHES OF PLANTING SOIL. DO NOT TOPDRESS BIORETENTION PLANTING AREAS WITH COMPOST.
- DELIVER PLANTS AFTER PREPARATIONS FOR PLANTING HAVE BEEN COMPLETED AND INSTALL WITHIN 48 HOURS. SET PLANTS IN APPROPRIATE ASPECT (SUN/SHADE), KEEP ROOTS MOIST AND PROTECT PLANTS FROM WEATHER AND MECHANICAL DAMAGE. PLANTS DAMAGED AFTER ARRIVAL AT THE SITE WILL BE REJECTED.
- PLACE MULCH TO DEPTH INDICATED ON THE DETAILS. TAPER MULCH AWAY FROM PLANTS AND KEEP FOLIAGE FREE OF MULCH. ROOT FLARE MUST REMAIN VISIBLE AT THE BASE OF TREES AND SHRUBS.
- APPLY PRE-EMERGENT HERBICIDE (PREEN OR SIMILAR) TO THE MULCH SURFACE. KEEP PLANT FOLIAGE FREE OF HERBICIDE.
- WATER NEW PLANTS IMMEDIATELY AFTER INSTALLATION AND AGAIN WITHIN 48 HOURS. WATER DEEPLY AND THOROUGHLY DURING PLANT ESTABLISHMENT PERIOD TO PROMOTE DEEP ROOT GROWTH.
- PRIOR TO TOPSOIL PLACEMENT, SUBSOIL IN AREAS TO BE SODDED SHALL BE LOOSENEED BY SCARIFYING TO A MINIMUM DEPTH OF 4 INCHES TO PERMIT BONDING OF TOPSOIL AND SUBSOIL. TOPSOIL SHALL BE SPREAD TO A DEPTH OF 6 INCHES AFTER LIGHT ROLLING. TOPSOIL SHALL NOT BE PLACED WHEN SUBGRADE IS FROZEN OR EXCESSIVELY WET OR DRY.
- DISTURBED AREAS NOT STABILIZED WITH PAVING OR PLANT MATERIALS AS SHOWN ON THE PLANTING PLAN SHALL BE PLANTED WITH LOCALLY SOURCED SOD OR SEEDED AND MULCHED.
- SOD TO BE PROTECTED FROM DRYING DURING TRANSPORT AND DELIVERY. LAY SOD WITHIN 24 HOURS OF HARVESTING.

INSPECTION & CERTIFICATION

- PLANT IDENTIFICATION TAGS MUST BE ATTACHED TO PLANTS OR STAKED WITH THE PLANTING BED UNTIL INITIAL INSPECTION BY THE PLAN PREPARER.
- INSTALLATION INSPECTION: NOTIFY THE LANDSCAPE ARCHITECT OF THE INSTALLATION SCHEDULE SO THAT THE REQUIRED INSPECTION(S) CAN BE ARRANGED. THE LANDSCAPE INSTALLATION INSPECTION CERTIFICATION MUST BE SUBMITTED TO THE BALTIMORE CITY DEPARTMENT OF PLANNING WITHIN 30 DAYS OF INSTALLATION.
- FINAL INSPECTION: A FINAL INSPECTION SHALL BE PERFORMED BY THE PLAN PREPARER WITHIN 30 DAYS PRIOR TO THE EXPIRATION OF THE PLANT WARRANTY. A FINAL INSPECTION REPORT INCLUDING A FINAL LANDSCAPE INSPECTION CERTIFICATION MUST BE SUBMITTED TO THE BALTIMORE CITY DEPARTMENT OF PLANNING.

MAINTENANCE & GUARANTEE

- PLANT ESTABLISHMENT AND MAINTENANCE SHALL BE THE RESPONSIBILITY OF THE CONTRACTOR FOR A PERIOD OF TWO YEARS FROM SUBSTANTIAL COMPLETION. CONTRACTOR SHALL SUBMIT A PROPOSED MAINTENANCE SCHEDULE TO THE OWNER & LANDSCAPE ARCHITECT FOR APPROVAL PRIOR TO COMPLETION OF THE PLANT INSTALLATION.
- CONTRACTOR SHALL GUARANTEE ALL PLANT MATERIALS FOR A MINIMUM OF TWO YEARS AFTER INSTALLATION IS COMPLETE AND APPROVED, AS REQUIRED BY CHESAPEAKE BAY CRITICAL AREA REGULATIONS AND THE BALTIMORE SUPPLEMENT TO THE MARYLAND FOREST CONSERVATION MANUAL.
- MAINTENANCE SHALL CONSIST OF WATERING, WEEDING, PRUNING, RESTORING PLANT SAUCERS, RESETTling PLANTS TO PROPER GRADES OR VERTICAL POSITION, ADJUSTING OR REPAIRING TREE STABILIZATION DEVICES, EDGING OF PLANTING BEDS, MONITORING AND TREATMENT OF DISEASE/INSECT INFESTATION AND PERFORMING OTHER OPERATIONS AS REQUIRED TO ESTABLISH HEALTHY, VIABLE PLANTS.
- WATER TURF AREAS AS REQUIRED TO ESTABLISH A HEALTHY STAND OF GRASS. MONITOR AND REMOVE WEEDS FROM LAWN AREAS. AT THE END OF THE MAINTENANCE PERIOD:

SODDED TURF SHALL BE WELL-ROOTED, EVEN COLOR AND FREE OF WEEDS AND DISEASE, BARE AREAS, OPEN JOINTS AND SURFACE IRREGULARITIES

SEEDED TURF SHALL BE UNIFORM AND DENSE, FREE OF WEEDS AND SURFACE IRREGULARITIES WITH 90 PERCENT COVERAGE AND NO BARE SPOTS IN EXCESS OF 5 X 5 INCHES
- PROVIDE WATER AS NEEDED TO SUPPLEMENT NATURAL RAINFALL DURING THE MAINTENANCE PERIOD. WATER TREES AND SHRUBS DEEPLY AND THOROUGHLY TO PROMOTE DEEP ROOT GROWTH.
- PLANT MATERIALS WITH MORE THAN 25% OF THE CROWN DEAD, DIEBACK OF THE CENTRAL LEADER OR IN A DISEASED OR UNHEALTHY CONDITION SHALL BE REPLACED AT THE CONTRACTOR'S EXPENSE AS ORIGINALLY SPECIFIED.
- TREE STAKES, GUYS AND WIRES MUST BE REMOVED AT THE END OF ONE YEAR.
- PRIOR TO FINAL INSPECTION, MULCH ALL PLANTING BEDS WITH AN ADDITIONAL 1 INCH OF MULCH.

MASTER PLANT SCHEDULE

ALL TREES MUST BE PROVIDED AT THE MINIMUM SIZES SHOWN TO ACHIEVE REQUIRED FOREST CONSERVATION MITIGATION CREDIT.

| KEY | QTY | BOTANICAL NAME COMMON NAME | SIZE | ROOT | SPACING | COMMENTS |
|-----------------------------------|-------|---|-----------|---------------------|----------|---|
| OVERSTORY TREES | | | | | | |
| QPH | 2 | QUERCUS PHELLOS WILLOW OAK | 3" CAL. | B&B | AS SHOWN | — |
| ORNAMENTAL TREES | | | | | | |
| AM | 3 | AMELANCHIER CANADENSIS 'AUTUMN BRILLIANCE' AUTUMN BRILLIANCE SERVICEBERRY | 8' HT. | #15 CONT. OR B&B | 12' O.C. | MULTI-STEM, 3-5 TRUNKS |
| BNB | 3 | BETULA NIGRA 'BNMTF' DURA-HEAT RIVER BIRCH | 8' HT. | B&B | AS SHOWN | MULTI-STEM, 3 TRUNKS |
| CC | 9 | CERCIS CANADENSIS EASTERN REDBUD | 2.5" CAL. | B&B | AS SHOWN | SINGLE STEM |
| CCFP | 13 | CERCIS CANADENSIS 'FOREST PANSY' FOREST PANSY EASTERN REDBUD | 2.5" CAL. | B&B | AS SHOWN | SINGLE STEM |
| CF | 6 | CORNUS FLORIDA 'CHEROKEE BRAVE' CHEROKEE BRAVE FLOWERING DOGWOOD | 2.5" CAL. | B&B | AS SHOWN | SINGLE STEM |
| CFC | 3 | CORNUS FLORIDA 'CHEROKEE PRINCESS' CHEROKEE PRINCESS FLOWERING DOGWOOD | 2.5" CAL. | B&B | AS SHOWN | SINGLE STEM |
| EVERGREEN TREES | | | | | | |
| CJY | 3 | CRYPTOMERIA JAPONICA 'YOSHINO' YOSHINO JAPANESE CEDAR | 6' HT. | #10 CONT. OR B&B | AS SHOWN | — |
| IOJK | 2 | ILEX OPACA 'JERSEY KNIGHT' JERSEY KNIGHT AMERICAN HOLLY | 6' HT. | #10 CONT. OR B&B | AS SHOWN | FULL WITH DENSE BRANCHING AND FOLIAGE |
| IOJP | 6 | ILEX OPACA 'JERSEY PRINCESS' JERSEY PRINCESS AMERICAN HOLLY | 6' HT. | #10 CONT. OR B&B | AS SHOWN | FULL WITH DENSE BRANCHING AND FOLIAGE |
| MG | 6 | MAGNOLIA GRANDIFLORA 'LITTLE GEM' LITTLE GEM SOUTHERN MAGNOLIA | 6' HT. | #10 CONT. OR B&B | AS SHOWN | — |
| TGG | 39 | THUJA 'GREEN GIANT' GREEN GIANT ARBORVITAE | 6' HT. | #10 CONT. | AS SHOWN | — |
| TO | 9 | THUJA OCCIDENTALIS 'SMARAGD' EMERALD GREEN AMERICAN ARBORVITAE | 6' HT. | #10 CONT. | AS SHOWN | — |
| SHRUBS | | | | | | |
| BGV | 17 | BUXUS X 'GREEN VELVET' GREEN VELVET BOXWOOD | 24" HT. | #3 CONT. | AS SHOWN | — |
| FOG | 44 | FOTHERGILLA GARDENII DWARF WITCHALDER | 36" HT. | #5 CONT. | AS SHOWN | — |
| HVLS | 1 | HAMAMELIS VIRGINIANA 'LITTLE SUZIE' LITTLE SUZIE WITCHHAZEL | 36" HT. | #5 CONT. | AS SHOWN | — |
| HQPW | 25 | HYDRANGEA QUERCIFOLIA 'PEE WEE' PEE WEE OAKLEAF HYDRANGEA | 18" HT. | #3 CONT. | AS SHOWN | — |
| HYC | 1,031 | HYPERICUM CALYCYNUM AARON'S BEARD | #1 | CONT. | 12" O.C. | — |
| IGS | 50 | ILEX GLABRA 'SHAMROCK' SHAMROCK INKBERRY | 24" HT. | #3 CONT. | 3' O.C. | — |
| IVSG | 2 | ILEX VERTICILLATA 'SOUTHERN GENTLEMAN' SOUTHERN GENTLEMAN WINTERBERRY | 36" HT. | #5 CONT. | AS SHOWN | — |
| IWR | 22 | ILEX VERTICILLATA 'WINTER RED' WINTER RED WINTERBERRY | 36" HT. | #5 CONT. | AS SHOWN | — |
| RAGL | 104 | RHUS AROMATICA 'GRO-LOW' GRO-LOW FRAGRANT SUMAC | 18" HT. | #3 CONT. | 3' O.C. | — |
| RPJM | 52 | RHODODENDRON 'PJM' PJM RHODODENDRON | 18" HT. | #3 CONT. | 3' O.C. | — |
| VRH | 22 | VIBURNUM RHYTIDOPHYLLUM LEATHERLEAF VIBURNUM | 4' HT. | #7 CONT. | 5' O.C. | — |
| PERENNIALS AND ORNAMENTAL GRASSES | | | | | | |
| EDLJ | 66 | EUTROCHUM DUBIUM 'LITTLE JOE' LITTLE JOE COASTAL PLAIN JOE PYE WEE | #1 | CONT. | 24" O.C. | — |
| HM | 132 | HIBISCUS MOSCHEUTOS CRIMSONEYED ROSEMALLOW | #1 | CONT. | 24" O.C. | — |
| RFG | 1,100 | RUDBECKIA FULGIDA 'GOLDSTURM' GOLDSTURM ORANGE CONEFLOWER | SP#4 | CONT. | 12" O.C. | — |
| NFWL | 533 | NEPETA X FAASSENII 'WALKER'S LOW' WALKER'S LOW CATMINT | #1 | CONT. | 18" O.C. | — |
| PVSD | 77 | PANICUM VIRGATUM 'SHENANDOAH' SHENANDOAH SWITCHGRASS | #1 | CONT. | 30" O.C. | — |
| PA | 720 | PAKERA AUREA GOLDEN RAGWORT | SP#4 | CONT. | 12" O.C. | — |
| SSTB | 11 | SCHIZACHYRIUM SCOPARIUM 'THE BLUES' THE BLUES LITTLE BLUESTEM | #1 | CONT. | AS SHOWN | — |
| VN | 29 | VERNONIA NOVEBORACENSIS NEW YORK IRONWEED | #1 | CONT. | 24" O.C. | — |
| SOD | | | | | | |
| — | | STATE-CERTIFIED BLEND OF 3 TALL FESCUE VARIETIES OR AS APPROVED BY OWNER | | | | CONTRACTOR SHALL VERIFY QUANTITY |
| SEED | | | | | | |
| — | | STATE-CERTIFIED BLEND OF 3 TALL FESCUE VARIETIES OR AS APPROVED BY OWNER | | | | CONTRACTOR SHALL VERIFY QUANTITY |

LANDSCAPE INSTALLATION INSPECTION CERTIFICATION

CITY OF BALTIMORE
DEPARTMENT OF PLANNING

I CERTIFY THAT THE INSTALLATION OF THE APPROVED FINAL LANDSCAPE PLAN SHOWN HEREIN HAS BEEN COMPLETED IN A MANNER CONSISTENT WITH THE GOALS AND INTENT OF AND IS IN COMPLIANCE WITH THE REQUIREMENTS AND STANDARDS OF THE BALTIMORE CITY LANDSCAPE MANUAL.

I ALSO CERTIFY THAT THE PLANTS INSTALLED IN ACCORDANCE WITH THE FINAL LANDSCAPE PLAN SHOWN HEREIN ARE SUBJECT TO A ONE-YEAR* REPLACEMENT WARRANTY TO ENSURE ESTABLISHMENT AND MAINTENANCE OF THE LANDSCAPING AND THE REPLACEMENT OF DEAD OR DAMAGED PLANTS. * TWO-YEAR REPLACEMENT WARRANTY IS REQUIRED FOR ALL TREES TO FULLFILL FOREST CONSERVATION MITIGATION REQUIREMENTS.

| | | |
|-------------------------------|--------------|-------------------------------|
| SHARON HUBER-PLANO | 410-281-2883 | SHARON.HUBER-PLANO@STVINC.COM |
| NAME OF PLAN PREPARER (PRINT) | PHONE NUMBER | EMAIL ADDRESS |
| 564 | | |
| SIGNATURE OF PREPARER | DATE | MD LICENSE NO. |

TWO YEAR MAINTENANCE AGREEMENT

TWO YEAR MAINTENANCE AGREEMENT

THE COMPANY RESPONSIBLE FOR TREE CARE:

THE LANDSCAPE CONTRACTOR SHALL BE RESPONSIBLE FOR MAINTENANCE AND TREE CARE FOR A PERIOD OF TWO YEARS. SERVICES SHALL INCLUDE, BUT NOT BE LIMITED TO THE FOLLOWING:

A. WATERING

- WATERING SHALL BE PROVIDED DURING THE GROWING SEASON AS REQUIRED
- FIRST GROWING SEASON: ONCE PER WEEK
- SECOND GROWING SEASON: AS NEEDED, BUT NOT LESS THAN ONCE PER MONTH DURING JULY AND AUGUST.

B. REINFORCEMENT PLANTING PROVISIONS

- A MINIMUM OF 100% OF THE TOTAL NUMBER OF TREES PLANTED PER ACRE IS REQUIRED TO SURVIVE AT THE END OF THE TWO YEAR MAINTENANCE PERIOD.

C. PROTECTION FROM DISEASE AND INJURY

- PERIODIC INSPECTION SHALL BE MADE FOR ANY EVIDENCE OF DISEASE OR DAMAGE.

APPLICANT NAME AND CONTACT INFORMATION:

APPLICANT SIGNATURE

LANDSCAPE CERTIFICATION FORM

LANDSCAPE CERTIFICATION
OWNER'S SIGNATURE AND CERTIFICATION FORM

I AM AWARE OF THE REQUIREMENTS OF THE BALTIMORE CITY FOREST CONSERVATION PROGRAM AND I AGREE TO COMPLY WITH THESE REGULATIONS AND ALL APPLICABLE POLICY, GUIDELINES AND ORDINANCES. I AGREE TO CERTIFY IMPLEMENTATION OF THE APPROVED LANDSCAPE PLAN UPON COMPLETION OF THE LANDSCAPE INSTALLATION NOT LATER THAN ONE (1) YEAR FROM DATE OF OCCUPANCY TO THE BALTIMORE CITY PLANNING DEPARTMENT, 417 E. FAYETTE STREET, 8TH FLOOR, BALTIMORE, MD 21202.

DEVELOPER'S SIGNATURE

OWNER'S NAME

OWNER'S SIGNATURE

OWNER'S ADDRESS

OWNER'S PHONE NUMBER

FINAL LANDSCAPE INSPECTION CERTIFICATION

CITY OF BALTIMORE
DEPARTMENT OF PLANNING

I CERTIFY THAT THE INSTALLATION OF THE APPROVED FINAL LANDSCAPE PLAN SHOWN HEREIN HAS BEEN COMPLETED IN A MANNER CONSISTENT WITH THE GOALS AND INTENT OF AND IS IN COMPLIANCE WITH THE REQUIREMENTS AND STANDARDS OF THE BALTIMORE CITY LANDSCAPE MANUAL.

I ALSO CERTIFY THAT THE INSTALLED LANDSCAPING HAS BEEN MAINTAINED IN A MANNER CONSISTENT WITH THE REQUIREMENTS AND STANDARDS OF THE BALTIMORE CITY LANDSCAPE MANUAL, INCLUDING THE REPLACEMENT OF DEAD OR DAMAGED PLANTS.

| | | |
|-------------------------------|--------------|-------------------------------|
| SHARON HUBER-PLANO | 410-281-2883 | SHARON.HUBER-PLANO@STVINC.COM |
| NAME OF PLAN PREPARER (PRINT) | PHONE NUMBER | EMAIL ADDRESS |
| 564 | | |
| SIGNATURE OF PREPARER | DATE | MD LICENSE NO. |

SPECIMEN TREE MITIGATION REQUIREMENT

PER BALTIMORE CITY SUPPLEMENT TO THE STATE FOREST CONSERVATION MANUAL, DATED DECEMBER 28, 2020, A TOTAL OF 171 CALIPER INCHES ARE REQUIRED FOR SPECIMEN TREE MITIGATION. THIS REQUIREMENT WAS DERIVED PER THE TABLE BELOW.

| REQUIRED MITIGATION RATIOS | CALIPER INCH (DBH) REMOVED | REQUIRED MITIGATION |
|-----------------------------|----------------------------|---------------------|
| 1:1 UP TO 60" CAL. REMOVED | 404 | 60 |
| 1:2 NEXT 40" CAL. REMOVED | 364 | 20 |
| 1:4 AFTER 100" CAL. REMOVED | 91 | 91 |
| TOTAL | | 171 |

| TYPE | QUANTITY | MITIGATION PROVIDED (CALIPER INCH) |
|--|----------|------------------------------------|
| DECIDUOUS TREES | 37 | 92.5 |
| EVERGREEN TREES* | 65 | 81.25 |
| TOTAL | | 173.75 |
| * TWO 6" HT. EVERGREEN TREES EQUAL ONE DECIDUOUS TREE AT 2.5" CAL. | | |



STV Incorporated

7125 Ambassador Road, Suite 200
Baltimore, Maryland 21244

www.stvinc.com

CONSULTANTS

OWNER / APPLICANT

CALVERT SCHOOL INCORPORATED
4300 N. CHARLES STREET
BALTIMORE, MD. 21218
ATTN: TOM TRAVERS
PH: 410.243.6054 EXT. 154

CONTACT INFORMATION

STV INCORPORATED
7125 AMBASSADOR ROAD
SUITE 200
BALTIMORE, MARYLAND 21244
ATTN: NING ZHOU
PH.: 410.944.9112
FAX: 410.298.2794

SEAL



License #564

SHARON HUBER-PLANO

5-11-21

I HEREBY CERTIFY THAT I HAVE PREPARED THE LANDSCAPE PLAN SHOWN HEREIN AND I AM A DULY LICENSED LANDSCAPE ARCHITECT UNDER THE LAWS OF THE STATE OF MARYLAND, LICENSE NO. 564. EXPIRATION DATE: AUGUST 12, 2021.

PROJECT IDENTIFICATION

THE CALVERT SCHOOL FIELD
HOUSE AND SQUASH COURT

200 TUSCANY ROAD,
204 TUSCANY ROAD &
4300 N. CHARLES STREET
BALTIMORE, MARYLAND 21210

WARD 12 SECTION 1 BLOCK
3701-G LOTS 6, 8, & 18

| | | | | | |
|--|--|--|--|--|--|
| | | | | | |
| | | | | | |
| | | | | | |
| | | | | | |
| | | | | | |
| | | | | | |

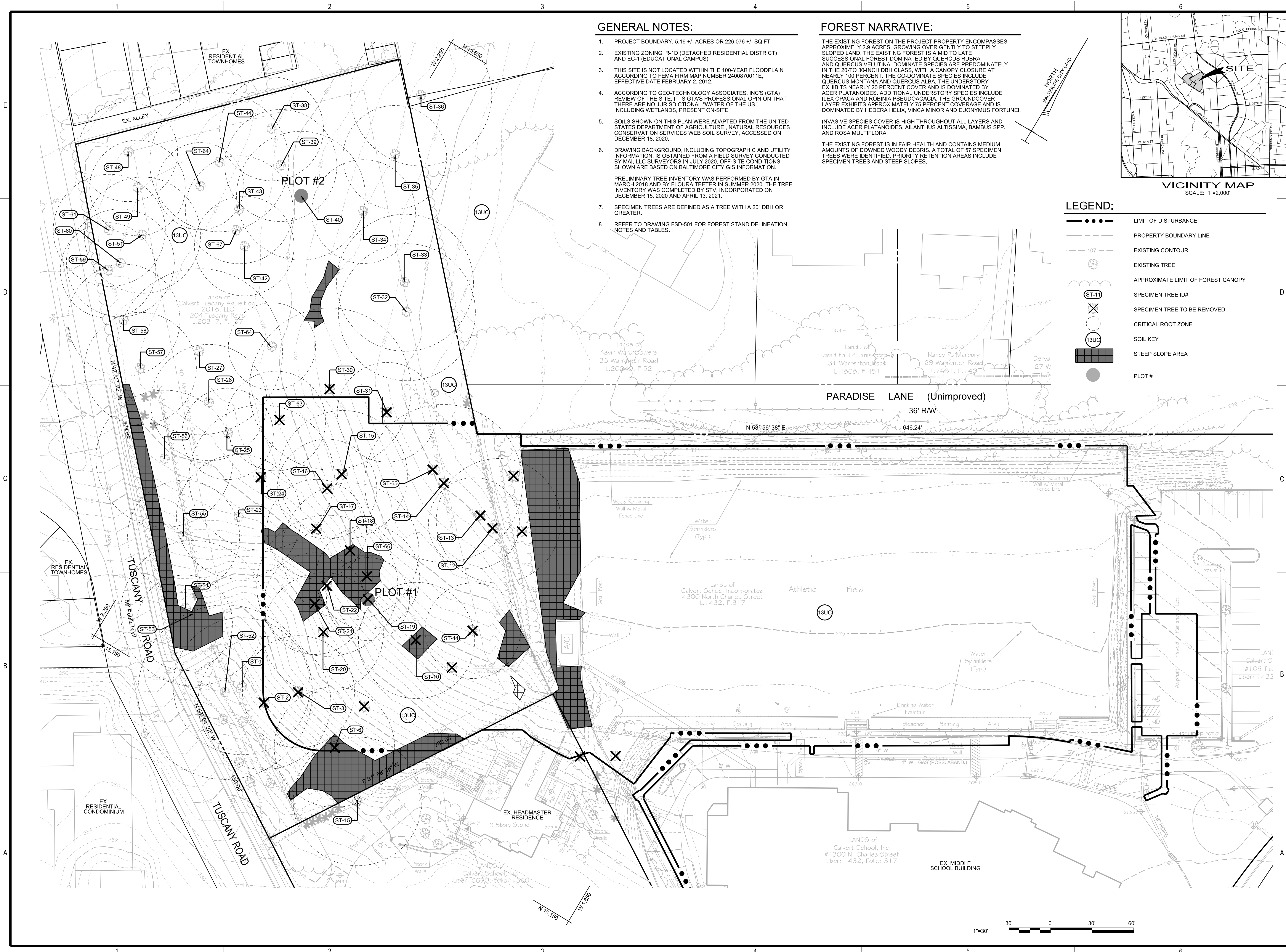
ISSUE BLOCK

| | |
|--------------|------------------|
| PROJECT NO.: | 3020532 |
| SCALE: | AS NOTED |
| DATE: | MAY 2021 |
| DESIGNED BY: | HLE |
| DRAWN BY: | HLE |
| CHECKED BY: | SHP |
| APPROVED BY: | NZ |
| COPYRIGHT: | STV INCORPORATED |

REVISED DEVELOPMENT PLAN

LANDSCAPE
NOTES

L-501
ESD# 8033
EPLANS# 2021-923



- GENERAL NOTES:**
- PROJECT BOUNDARY: 5.19 +/- ACRES OR 226,076 +/- SQ FT
 - EXISTING ZONING: R-1D (DETACHED RESIDENTIAL DISTRICT) AND EC-1 (EDUCATIONAL CAMPUS)
 - THIS SITE IS NOT LOCATED WITHIN THE 100-YEAR FLOODPLAIN ACCORDING TO FEMA FIRM MAP NUMBER 2400870011E, EFFECTIVE DATE FEBRUARY 2, 2012.
 - ACCORDING TO GEO-TECHNOLOGY ASSOCIATES, INC'S (GTA) REVIEW OF THE SITE, IT IS GTA'S PROFESSIONAL OPINION THAT THERE ARE NO JURISDICTIONAL "WATER OF THE US," INCLUDING WETLANDS, PRESENT ON-SITE.
 - SOILS SHOWN ON THIS PLAN WERE ADAPTED FROM THE UNITED STATES DEPARTMENT OF AGRICULTURE, NATURAL RESOURCES CONSERVATION SERVICES WEB SOIL SURVEY, ACCESSED ON DECEMBER 18, 2020.
 - DRAWING BACKGROUND, INCLUDING TOPOGRAPHIC AND UTILITY INFORMATION, IS OBTAINED FROM A FIELD SURVEY CONDUCTED BY MAI, LLC SURVEYORS IN JULY 2020. OFF-SITE CONDITIONS SHOWN ARE BASED ON BALTIMORE CITY GIS INFORMATION.
 - PRELIMINARY TREE INVENTORY WAS PERFORMED BY GTA IN MARCH 2018 AND BY FLOURA TEEBTER IN SUMMER 2020. THE TREE INVENTORY WAS COMPLETED BY STV, INCORPORATED ON DECEMBER 15, 2020 AND APRIL 13, 2021.
 - SPECIMEN TREES ARE DEFINED AS A TREE WITH A 20" DBH OR GREATER.
 - REFER TO DRAWING FSD-501 FOR FOREST STAND DELINEATION NOTES AND TABLES.

FOREST NARRATIVE:

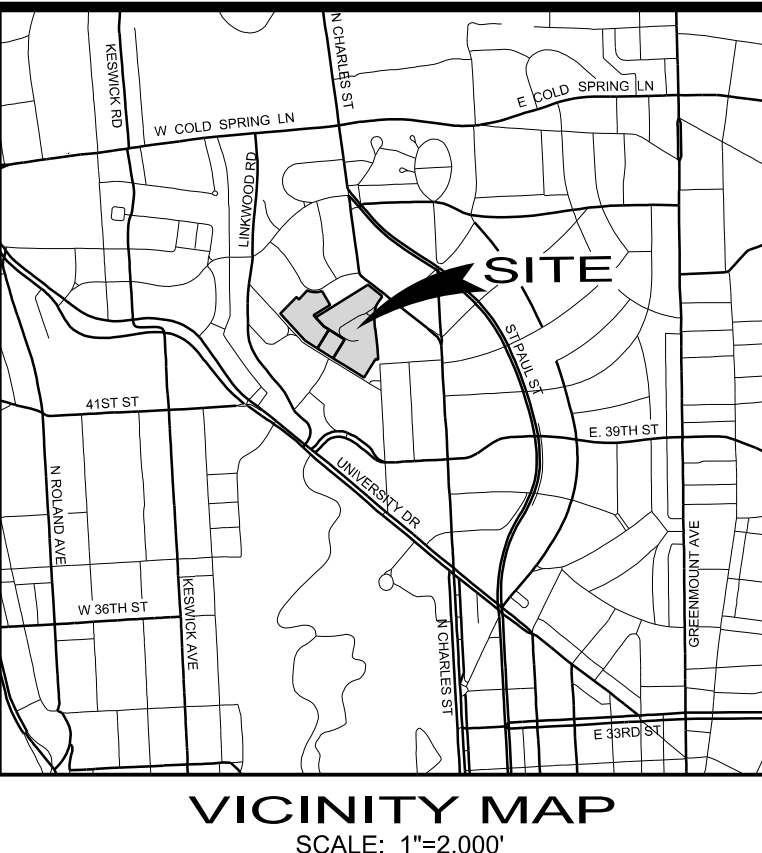
THE EXISTING FOREST ON THE PROJECT PROPERTY ENCOMPASSES APPROXIMATELY 2.9 ACRES, GROWING OVER GENTLY TO STEEPLY SLOPED LAND. THE EXISTING FOREST IS A MID TO LATE SUCCESSIONAL FOREST DOMINATED BY QUERCUS RUBRA AND QUERCUS VELUTINA. DOMINATE SPECIES ARE PREDOMINATELY IN THE 20-TO 30-INCH DBH CLASS, WITH A CANOPY CLOSURE AT NEARLY 100 PERCENT. THE CO-DOMINATE SPECIES INCLUDE QUERCUS MONTANA AND QUERCUS ALBA. THE UNDERSTORY EXHIBITS NEARLY 20 PERCENT COVER AND IS DOMINATED BY ACER PLATANOIDES. ADDITIONAL UNDERSTORY SPECIES INCLUDE ILEX OPACA AND ROBINIA PSEUDOACACIA. THE GROUND COVER LAYER EXHIBITS APPROXIMATELY 75 PERCENT COVERAGE AND IS DOMINATED BY HEDERA HELIX, VINCA MINOR AND EUONYMUS FORTUNEI.

INVASIVE SPECIES COVER IS HIGH THROUGHOUT ALL LAYERS AND INCLUDE ACER PLATANOIDES, ALANTHUS ALTISSIMA, BAMBUS SPP. AND ROSA MULTIFLORA.

THE EXISTING FOREST IS IN FAIR HEALTH AND CONTAINS MEDIUM AMOUNTS OF DOWNED WOODY DEBRIS. A TOTAL OF 57 SPECIMEN TREES WERE IDENTIFIED. PRIORITY RETENTION AREAS INCLUDE SPECIMEN TREES AND STEEP SLOPES.

LEGEND:

- LIMIT OF DISTURBANCE
- PROPERTY BOUNDARY LINE
- - - - - EXISTING CONTOUR
- EXISTING TREE
- APPROXIMATE LIMIT OF FOREST CANOPY
- ST-11 SPECIMEN TREE ID#
- X SPECIMEN TREE TO BE REMOVED
- CRITICAL ROOT ZONE
- 13UC SOIL KEY
- STEEP SLOPE AREA
- PLOT #



STV Incorporated
7125 Ambassador Road, Suite 200
Baltimore, Maryland 21244
www.stvinc.com

CONSULTANTS

OWNER / APPLICANT

CALVERT SCHOOL INCORPORATED
4300 N. CHARLES STREET
BALTIMORE, MD, 21218
ATTN: TOM TRAVERS
PH: 410.243.8054 EXT. 154

CONTACT INFORMATION

STV INCORPORATED
7125 AMBASSADOR ROAD
SUITE 200
BALTIMORE, MARYLAND 21244
ATTN: NING ZHOU
PH: 410.944.9112
FAX: 410.298.2794

SEAL

SHARON HUBER
5-11-21
STATE OF MARYLAND

I HEREBY CERTIFY THAT THESE DOCUMENTS WERE PREPARED OR REVIEWED BY ME OR A DULY LICENSED PROFESSIONAL ARCHITECT UNDER THE LAWS OF THE STATE OF MARYLAND, LICENSE NO. 564, EXPIRATION DATE: AUGUST 12, 2021.

PROJECT IDENTIFICATION

THE CALVERT SCHOOL FIELD HOUSE AND SQUASH COURT

200 TUSCANY ROAD,
204 TUSCANY ROAD &
4300 N. CHARLES STREET
BALTIMORE, MARYLAND 21210

WARD 12 SECTION 1 BLOCK
3701-G LOTS 6, 8, & 18

| MARK | DATE | DESCRIPTION | BY |
|--------------------------|------|------------------|----|
| ISSUE BLOCK | | | |
| PROJECT NO.: | | 3020532 | |
| SCALE: | | 1" = 30' | |
| DATE: | | MAY 2021 | |
| DESIGNED BY: | | HLE | |
| DRAWN BY: | | HLE | |
| CHECKED BY: | | SHP | |
| APPROVED BY: | | NZ | |
| COPYRIGHT: | | STV INCORPORATED | |
| REVISED DEVELOPMENT PLAN | | | |

FOREST STAND DELINEATION

FSD-101

ESD# 8033
EPLANS# 2021-923
10 of 11

SPECIMEN TREE LIST

| ID# | BOTANICAL NAME | COMMON NAME | SIZE (DBH) | CONDITION | STATUS | SPECIMEN TREE MITIGATION REQUIRED (Y/N) | COMMENTS |
|-------|-------------------------|------------------|------------|-----------|--------|--|--|
| ST-1 | QUERCUS RUBRA | NORTHERN RED OAK | 33 | GOOD | | | MULTI-STEM SPLIT AT ~4' |
| ST-2 | QUERCUS RUBRA | NORTHERN RED OAK | 32 | FAIR | REMOVE | Y | ONE-SIDED CROWN GROWTH |
| ST-3 | QUERCUS RUBRA | NORTHERN RED OAK | 27 | FAIR | REMOVE | Y | SOME CROWN DIEBACK |
| ST-4 | OMITTED NUMBER | | | | | | |
| ST-5 | OMITTED NUMBER | | | | | | |
| ST-6 | QUERCUS RUBRA | NORTHERN RED OAK | 29 | FAIR | REMOVE | Y | ONE-SIDED CROWN GROWTH |
| ST-7 | OMITTED NUMBER | | | | | | |
| ST-8 | OMITTED NUMBER | | | | | | |
| ST-9 | QUERCUS RUBRA | NORTHERN RED OAK | 55 | DEAD | | | TOPPED AT ~30', LARGE BRANCH BROKEN |
| ST-10 | QUERCUS MONTANA | CHESTNUT OAK | 30 | POOR | REMOVE | N | HEAVY LEANING |
| ST-11 | QUERCUS VELUTINA | BLACK OAK | 23 | POOR | REMOVE | N | LEANING/CROWN DIEBACK |
| ST-12 | QUERCUS MONTANA | CHESTNUT OAK | 30 | POOR | REMOVE | N | HEAVY LEANING |
| ST-13 | QUERCUS MONTANA | CHESTNUT OAK | 22 | POOR | REMOVE | N | HEAVY LEANING |
| ST-14 | QUERCUS RUBRA | NORTHERN RED OAK | 38 | FAIR | REMOVE | Y | LEANING/SOME VINE COVERAGE |
| ST-15 | LIRIODENDRON TULIPIFERA | TULIPTREE | 31 | GOOD | REMOVE | Y | |
| ST-16 | QUERCUS MONTANA | CHESTNUT OAK | 24 | GOOD | REMOVE | Y | ONE-SIDED CROWN GROWTH |
| ST-17 | QUERCUS VELUTINA | BLACK OAK | 24 | FAIR | REMOVE | Y | MULTI-STEM |
| ST-18 | QUERCUS VELUTINA | BLACK OAK | 33 | FAIR | REMOVE | Y | LEANING |
| ST-19 | LIRIODENDRON TULIPIFERA | TULIPTREE | 25 | FAIR | REMOVE | Y | ONE-SIDED CROWN GROWTH, ENGLISH IVY COVERAGE |
| ST-20 | QUERCUS VELUTINA | BLACK OAK | 29 | FAIR | REMOVE | Y | ONE-SIDED CROWN GROWTH AND LEANING |
| ST-21 | QUERCUS MONTANA | CHESTNUT OAK | 24.5 | POOR | REMOVE | N | HEAVY LEANING |
| ST-22 | QUERCUS RUBRA | NORTHERN RED OAK | 34 | GOOD | REMOVE | Y | ONE-SIDED CROWN GROWTH |
| ST-23 | QUERCUS VELUTINA | BLACK OAK | 22 | FAIR | | | LEANING |
| ST-24 | QUERCUS RUBRA | NORTHERN RED OAK | 35 | GOOD | REMOVE | Y | |
| ST-25 | QUERCUS VELUTINA | BLACK OAK | 22 | FAIR | | | LEANING |
| ST-26 | QUERCUS MONTANA | CHESTNUT OAK | 28 | POOR | | | ONE-SIDED CROWN GROWTH, BORE HOLES AND CROWN DIEBACK |
| ST-27 | QUERCUS VELUTINA | BLACK OAK | 40 | GOOD | | | LARGE BROKEN BRANCH |
| ST-28 | | DEAD STANDING | | DEAD | | | |
| ST-29 | QUERCUS VELUTINA | BLACK OAK | 32 | DEAD | | | LEANING |
| ST-30 | QUERCUS RUBRA | NORTHERN RED OAK | 39 | GOOD | REMOVE | Y | LEAF PILES AT BASE FROM MAINTENANCE |
| ST-31 | QUERCUS MONTANA | CHESTNUT OAK | 24 | DEAD | REMOVE | N | LEANING, ENGLISH IVY COVERAGE |
| ST-32 | QUERCUS ALBA | WHITE OAK | 37 | POOR | | | ENGLISH IVY COVERAGE, FALLEN/REMOVED PER TREE SURVEY PERFORMED ON 04/13/21 |
| ST-33 | FRAXINUS AMERICANA | WHITE ASH | 33 | POOR | | | ENGLISH IVY COVERAGE, FALLEN/REMOVED PER TREE SURVEY PERFORMED ON 04/13/21 |
| ST-34 | QUERCUS ALBA | WHITE OAK | 34 | GOOD | | | VINES |
| ST-35 | NYSSA SYLVATICA | BLACKGUM | 25 | GOOD | | | ENGLISH IVY COVERAGE |
| ST-36 | LIRIODENDRON TULIPIFERA | TULIPTREE | 34 | FAIR | | | IN FENCE |
| ST-37 | QUERCUS RUBRA | NORTHERN RED OAK | 39 | DEAD | | | CROWN DIEBACK, LARGE BURL AT BASE |
| ST-38 | QUERCUS VELUTINA | BLACK OAK | 25 | POOR | | | MAJOR DIEBACK |
| ST-39 | QUERCUS RUBRA | NORTHERN RED OAK | 27 | FAIR | | | LEANING |
| ST-40 | QUERCUS RUBRA | NORTHERN RED OAK | 31 | FAIR | | | SOME BASE ROT |
| ST-41 | OMITTED NUMBER | | | | | | |
| ST-42 | QUERCUS VELUTINA | BLACK OAK | 24 | FAIR | | | CROWN DIEBACK |
| ST-43 | QUERCUS VELUTINA | BLACK OAK | 26 | FAIR | | | LEANING |
| ST-44 | QUERCUS RUBRA | NORTHERN RED OAK | 33.5 | FAIR | | | HOLE IN TRUNK |
| ST-45 | OMITTED NUMBER | | | | | | |
| ST-46 | OMITTED NUMBER | | | | | | |
| ST-47 | OMITTED NUMBER | | | | | | |
| ST-48 | QUERCUS VELUTINA | BLACK OAK | 24 | FAIR | | | LEANING |
| ST-49 | QUERCUS ALBA | WHITE OAK | 23 | FAIR | | | ONE-SIDED CROWN GROWTH |
| ST-50 | OMITTED NUMBER | | | | | | |
| ST-51 | QUERCUS VELUTINA | BLACK OAK | 28 | FAIR | | | LEANING |
| ST-52 | QUERCUS RUBRA | NORTHERN RED OAK | 42 | GOOD | | | ONE-SIDED CROWN GROWTH |
| ST-53 | QUERCUS RUBRA | NORTHERN RED OAK | 35 | GOOD | | | ONE-SIDED CROWN GROWTH |
| ST-54 | QUERCUS RUBRA | NORTHERN RED OAK | 23 | FAIR | | | ONE-SIDED CROWN GROWTH |
| ST-55 | QUERCUS RUBRA | NORTHERN RED OAK | 27 | FAIR | | | ONE-SIDED CROWN GROWTH, ENGLISH IVY COVERAGE |
| ST-56 | QUERCUS ALBA | WHITE OAK | 33 | FAIR | | | ONE-SIDED CROWN GROWTH |
| ST-57 | QUERCUS ALBA | WHITE OAK | 27 | FAIR | | | ONE-SIDED CROWN GROWTH |
| ST-58 | QUERCUS ALBA | WHITE OAK | 27 | GOOD | | | LIGHT LEANING |
| ST-59 | QUERCUS ALBA | WHITE OAK | 23 | FAIR | | | LEANING, NEXT TO ACCESS ROAD |
| ST-60 | QUERCUS VELUTINA | BLACK OAK | 26 | FAIR | | | LEANING |
| ST-61 | QUERCUS ALBA | WHITE OAK | 27 | FAIR | | | LEANING |
| ST-62 | OMITTED NUMBER | | | | | | |
| ST-63 | QUERCUS VELUTINA | BLACK OAK | 24 | FAIR | REMOVE | Y | MULTI-STEM |
| ST-64 | QUERCUS ALBA | WHITE OAK | 21 | FAIR | | | LEANING |
| ST-65 | FAGUS GRANDIFOLIA | AMERICAN BEECH | 20 | GOOD | REMOVE | Y | |
| ST-66 | QUERCUS SPP. | OAK SPECIES | 20 | FAIR | REMOVE | Y | LEANING |
| ST-67 | QUERCUS SPP. | OAK SPECIES | 20 | GOOD | | | |

TOTAL SPECIMEN TREE DBH INCHES TO BE REMOVED: 464

SPECIMEN TREE MITIGATION REQUIREMENT

PER BALTIMORE CITY SUPPLEMENT TO THE STATE FOREST CONSERVATION MANUAL, DATED DECEMBER 28, 2020, A TOTAL OF 171 CALIPER INCHES ARE REQUIRED FOR SPECIMEN TREE MITIGATION. THIS REQUIREMENT WAS DERIVED PER THE TABLE BELOW.

| REQUIRED MITIGATION RATIOS | CALIPER INCH (DBH) REMOVED | REQUIRED MITIGATION |
|-----------------------------|-------------------------------|------------------------|
| 1:1 UP TO 60" CAL. REMOVED | 404 | 60 |
| 1:2 NEXT 40" CAL. REMOVED | 364 | 20 |
| 1:4 AFTER 100" CAL. REMOVED | 91 | 91 |
| TOTAL | | 171 |

FOREST CONSERVATION WORKSHEET

| FOREST CONSERVATION WORKSHEET | | | | |
|-------------------------------|--|--|--|--|
| | | | | |
| | | | | |
| | | | | |
| | | | | |
| | | | | |
| | | | | |
| | | | | |
| | | | | |
| | | | | |
| | | | | |
| | | | | |
| | | | | |
| | | | | |
| | | | | |
| | | | | |
| | | | | |
| | | | | |
| | | | | |
| | | | | |
| | | | | |
| | | | | |
| | | | | |
| | | | | |
| | | | | |
| | | | | |
| | | | | |
| | | | | |
| | | | | |
| | | | | |
| | | | | |
| | | | | |
| | | | | |
| | | | | |
| | | | | |
| | | | | |
| | | | | |
| | | | | |
| | | | | |
| | | | | |
| | | | | |
| | | | | |
| | | | | |
| | | | | |
| | | | | |
| | | | | |
| | | | | |
| | | | | |
| | | | | |
| | | | | |
| | | | | |
| | | | | |
| | | | | |
| | | | | |
| | | | | |
| | | | | |
| | | | | |
| | | | | |
| | | | | |
| | | | | |
| | | | | |
| | | | | |
| | | | | |
| | | | | |
| | | | | |
| | | | | |
| | | | | |
| | | | | |
| | | | | |
| | | | | |
| | | | | |
| | | | | |
| | | | | |
| | | | | |
| | | | | |
| | | | | |
| | | | | |
| | | | | |
| | | | | |
| | | | | |
| | | | | |
| | | | | |
| | | | | |
| | | | | |
| | | | | |
| | | | | |
| | | | | |
| | | | | |
| | | | | |
| | | | | |
| | | | | |
| | | | | |
| | | | | |
| | | | | |
| | | | | |
| | | | | |
| | | | | |
| | | | | |
| | | | | |
| | | | | |
| | | | | |
| | | | | |
| | | | | |
| | | | | |
| | | | | |
| | | | | |
| | | | | |
| | | | | |
| | | | | |
| | | | | |
| | | | | |
| | | | | |
| | | | | |
| | | | | |
| | | | | |
| | | | | |
| | | | | |
| | | | | |
| | | | | |
| | | | | |
| | | | | |
| | | | | |
| | | | | |
| | | | | |
| | | | | |
| | | | | |
| | | | | |
| | | | | |
| | | | | |
| | | | | |
| | | | | |
| | | | | |
| | | | | |
| | | | | |
| | | | | |
| | | | | |
| | | | | |
| | | | | |
| | | | | |
| | | | | |
| | | | | |
| | | | | |
| | | | | |
| | | | | |
| | | | | |
| | | | | |
| | | | | |
| | | | | |
| | | | | |
| | | | | |
| | | | | |
| | | | | |
| | | | | |
| | | | | |
| | | | | |
| | | | | |
| | | | | |
| | | | | |
| | | | | |
| | | | | |
| | | | | |
| | | | | |
| | | | | |
| | | | | |
| | | | | |
| | | | | |
| | | | | |
| | | | | |
| | | | | |
| | | | | |
| | | | | |
| | | | | |
| | | | | |
| | | | | |
| | | | | |
| | | | | |
| | | | | |
| | | | | |
| | | | | |
| | | | | |
| | | | | |
| | | | | |
| | | | | |
| | | | | |
| | | | | |
| | | | | |
| | | | | |
| | | | | |
| | | | | |
| | | | | |
| | | | | |
| | | | | |
| | | | | |
| | | | | |
| | | | | |
| | | | | |
| | | | | |
| | | | | |
| | | | | |
| | | | | |
| | | | | |
| | | | | |
| | | | | |
| | | | | |
| | | | | |
| | | | | |
| | | | | |
| | | | | |
| | | | | |
| | | | | |
| | | | | |
| | | | | |
| | | | | |
| | | | | |
| | | | | |
| | | | | |
| | | | | |
| | | | | |
| | | | | |
| | | | | |
| | | | | |
| | | | | |
| | | | | |
| | | | | |
| | | | | |
| | | | | |
| | | | | |
| | | | | |
| | | | | |
| | | | | |
| | | | | |
| | | | | |
| | | | | |
| | | | | |
| | | | | |
| | | | | |
| | | | | |
| | | | | |
| | | | | |
| | | | | |
| | | | | |
| | | | | |
| | | | | |
| | | | | |
| | | | | |
| | | | | |
| | | | | |
| | | | | |
| | | | | |
| | | | | |
| | | | | |
| | | | | |
| | | | | |
| | | | | |
| | | | | |
| | | | | |
| | | | | |
| | | | | |
| | | | | |
| | | | | |
| | | | | |
| | | | | |
| | | | | |
| | | | | |
| | | | | |
| | | | | |
| | | | | |
| | | | | |
| | | | | |
| | | | | |
| | | | | |
| | | | | |
| | | | | |
| | | | | |
| | | | | |
| | | | | |
| | | | | |
| | | | | |
| | | | | |
| | | | | |
| | | | | |
| | | | | |
| | | | | |
| | | | | |
| | | | | |
| | | | | |
| | | | | |
| | | | | |
| | | | | |
| | | | | |
| | | | | |
| | | | | |
| | | | | |
| | | | | |
| | | | | |
| | | | | |
| | | | | |
| | | | | |
| | | | | |
| | | | | |
| | | | | |
| | | | | |
| | | | | |
| | | | | |
| | | | | |
| | | | | |
| | | | | |
| | | | | |
| | | | | |
| | | | | |
| | | | | |
| | | | | |
| | | | | |
| | | | | |
| | | | | |
| | | | | |
| | | | | |
| | | | | |
| | | | | |
| | | | | |
| | | | | |
| | | | | |
| | | | | |
| | | | | |
| | | | | |
| | | | | |
| | | | | |
| | | | | |
| | | | | |
| | | | | |
| | | | | |
| | | | | |
| | | | | |
| | | | | |
| | | | | |
| | | | | |
| | | | | |
| | | | | |
| | | | | |
| | | | | |
| | | | | |
| | | | | |
| | | | | |
| | | | | |
| | | | | |
| | | | | |
| | | | | |
| | | | | |
| | | | | |
| | | | | |
| | | | | |
| | | | | |
| | | | | |
| | | | | |
| | | | | |
| | | | | |
| | | | | |
| | | | | |
| | | | | |
| | | | | |
| | | | | |
| | | | | |
| | | | | |
| | | | | |
| | | | | |
| | | | | |
| | | | | |
| | | | | |
| | | | | |
| | | | | |
| | | | | |
| | | | | |
| | | | | |
| | | | | |
| | | | | |
| | | | | |
| | | | | |
| | | | | |
| | | | | |
| | | | | |
| | | | | |
| | | | | |
| | | | | |
| | | | | |
| | | | | |
| | | | | |
| | | | | |
| | | | | |
| | | | | |
| | | | | |
| | | | | |
| | | | | |
| | | | | |
| | | | | |
| | | | | |
| | | | | |
| | | | | |
| | | | | |
| | | | | |
| | | | | |
| | | | | |
| | | | | |
| | | | | |
| | | | | |
| | | | | |
| | | | | |
| | | | | |
| | | | | |
| | | | | |
| | | | | |
| | | | | |
| | | | | |
| | | | | |
| | | | | |
| | | | | |
| | | | | |
| | | | | |
| | | | | |
| | | | | |
| | | | | |
| | | | | |
| | | | | |
| | | | | |
| | | | | |
| | | | | |
| | | | | |
| | | | | |
| | | | | |
| | | | | |
| | | | | |
| | | | | |
| | | | | |